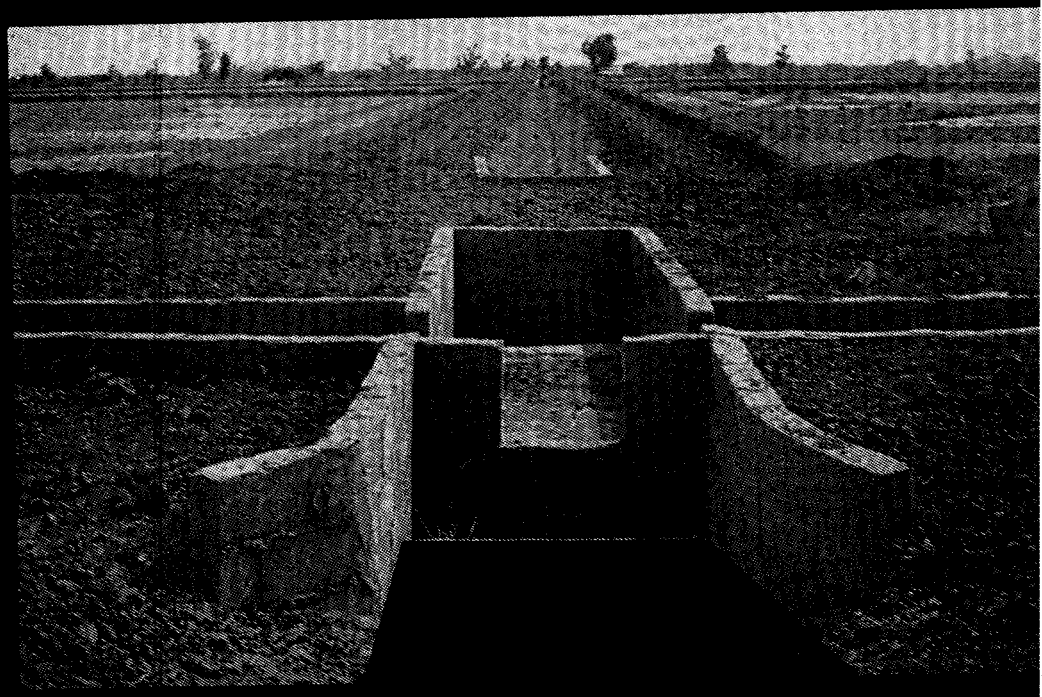


Centre de Documentation OMVS
B.P. 383
Saint-Louis
Senegal

*Commission pour la Mise en Valeur
du Fleuve Sénégal (OMVS)
Haut Commissariat
Centre Régional de Documentation
S. L. 1971*



094907

End-of-project Report
WARDA Water Management Project

Farmer-Managed Irrigation in the
Senegal River Valley:
Implications for the Current Design Method

By

G. Diemer and

F.P. Huibers

Citation: Diemer, G. and F.P. Huibers (1991). *Farmer-managed irrigation in the Senegal valley: Implications for the Current Design Method*. End-of-project report, WARDA/Wageningen Agricultural University, Water Management Project. St Louis and Wageningen.

Key words: irrigation / water management / farming systems / farmers' participation / design method / village scheme / Senegal river valley

U.D.C. 631.67:316.4(282.262.7)(066)=60

Summary: This report is based on field research in the Senegal River valley. It shows how farmers manage irrigation schemes, relating management to scheme design. One chapter treats the characteristics and utilization of the relatively successful village irrigation schemes. Others are devoted to the concept of so-called intermediate schemes, which are larger in scale and designed with the market production of rice as the objective. Irrigation will only contribute to development if planners and engineers develop a better design method. This end-of-project report shows that designing effective irrigation schemes requires the integration of technical and socio-cultural elements.

WARDA/ADRAO

Irrigated Sahel Programme: Regional Station on Irrigated Rice, B.P. 96, Saint-Louis, Senegal
Tel. (221) 611193 ; Telex 75127 ADRAO SG ; Fax (221) 611491

Main Office: B.P. 2551, Bouaké 01, Côte d'Ivoire
Tel. (225) 634514; Telex 69138 ADRAO CI; Fax (225) 227865

Wageningen Agricultural University

Department of Irrigation and Soil and Water Conservation
Nieuwe Kanaal 11; 6709 PA Wageningen; the Netherlands
Tel. (31) 8370 84190 ; Telex 45015 NL ; Fax (31) 8370 84759

The research for this publication was financed by the Netherlands Minister for Development Cooperation, who also shares copyright. Citation is encouraged. Short excerpts may be translated and/or reproduced without prior permission, on condition that the source is indicated. For translation and/or reproduction of the publication in its entirety, the Section for Research and Technology of the aforementioned Minister (P.O. Box 20061, 2500 EB The Hague) should be notified in advance. Responsibility for the contents and for the opinions expressed rests solely with the authors; publication does not constitute endorsement by the Netherlands Minister for Development Cooperation.

Contents

	Page
Foreword	vii
Acknowledgements	ix
1. Introduction	1
1.1. Irrigation in Africa	1
1.2. The Views of Donor Agencies	2
1.3. The Views of African Planners	2
1.4. The Views of African and European Engineers	3
1.5. The Views of Social Scientists	4
1.6. The Research Site: Physical and Human Dimensions	6
1.7. Irrigation Development in the Basin	8
1.8. The WARDA Water Management Project	9
2. A Case of Sustained Development: The Village Schemes	13
2.1. Introduction	13
2.2. Presentation of Case Studies	14
2.3. Technical Characteristics of Village Schemes	15
2.4. Organizational Characteristics of Village Schemes	22
2.5. Irrigated Production as a Component of the Farming System	25
2.6. Conclusions and Recommendations	31
3. Intermediate Schemes: Defining an Irrigation Concept	33
3.1. The Origins and Concept of the Intermediate Scheme	33
3.2. The View of the Planners	35
3.3. The Farmers' Reality: Management of the Hydraulic Infrastructure	38
3.4. The Farmers' Reality: Use of the Plot	43
3.5. Conclusions: Village Schemes and IT Schemes Compared	47
4. Towards an Effective Design Method	51
4.1. The Setting	51
4.2. Designing an Intermediate Scheme near Kaskas	54
4.3. Discussion	58
4.4. Aftermath	62
4.5. Lifting the Superfluous Constraint: An Alternative Design	63
4.6. Conclusions	64
5. Conclusions and Recommendations	65
5.1. Conclusions	65
5.2. Recommendations	66
References	69

	Page
Abbreviations	73
Annexes	75
1. List of Research Reports	75
2. List of Working Documents	76
3. Summarized Information on Village Schemes Studied	78
4. Comparison of Field reality with Design Information (M'leiga)	84
5. Irrigation Rules on the Medina Gaia I Scheme	85

List of Tables

2.1. Relative contribution of irrigated agriculture to cereal production and needs	14
2.2. Village schemes studied during the second phase	15
2.3. Calculated range of optimal irrigation intervals	20
2.4. Average annual cash requirements of a Black Moor household	27
3.1. Comparison of two types of irrigation schemes in the Senegal river basin	34
3.2. The utilization of an IT scheme	38
3.3. Range of water requirements at plot level	40
3.4. Fuel consumption in IT schemes	42
3.5. Production of paddy on an IT scheme (t/ha)	45
3.6. The use of labour on three IT schemes (rainy season 1987)	45
3.7. Labour allocation by gender and age	46
3.8. Delays in the 1987 rainy season rice calendar	46
3.9. Net returns of IT and village schemes compared	47
4.1. Sociological studies for the design of an intermediate scheme	59

List of Figures

1.1. The Senegal river basin	7
1.2. The ethnic groups of the Senegal river valley	8
1.3. The Diama dam in the delta of the Senegal river	9
1.4. Research locations of the WARDA Water Management Project	12
2.1. Bird's eye view of the M'leiga village scheme	17
2.2. Layout of the M'leiga village scheme	18
2.3. Erosion behind a drop structure after one season of cultivation	19
2.4. Improvement of the layout by farmers	22
2.5. Interactions between farmer groups during irrigation	23
3.1. The central water source of an intermediate scheme	36
3.2. Basic layout of an IT scheme	37
3.3. Proposed cropping calendar for IT schemes	38
3.4. Water distribution by means of siphons	40
3.5. Water distribution by means of fixed pipes	41

3.6. Water rotation to the sections at Dar-el-Barka (hot dry season)	42
3.7. The water rotation for Donaye IT-3, rainy season 1987	44
4.1. Layout of an intermediate scheme using a conventional design	52
4.2. Factors determining the viability of an irrigation scheme	53
4.3. The floodplain of Kaskas (Senegal)	55
4.4. Layout of an intermediate scheme using an alternative design	60
4.5. Layout of an intermediate scheme located close to the river or to a <i>marigot</i>	63

